

INSTITUTIONAL WASH IMPLEMENTATION IN COWASH IV

Yohannes Melaku
CMP Specialist (COWASH-FTAT)
February 24/2022

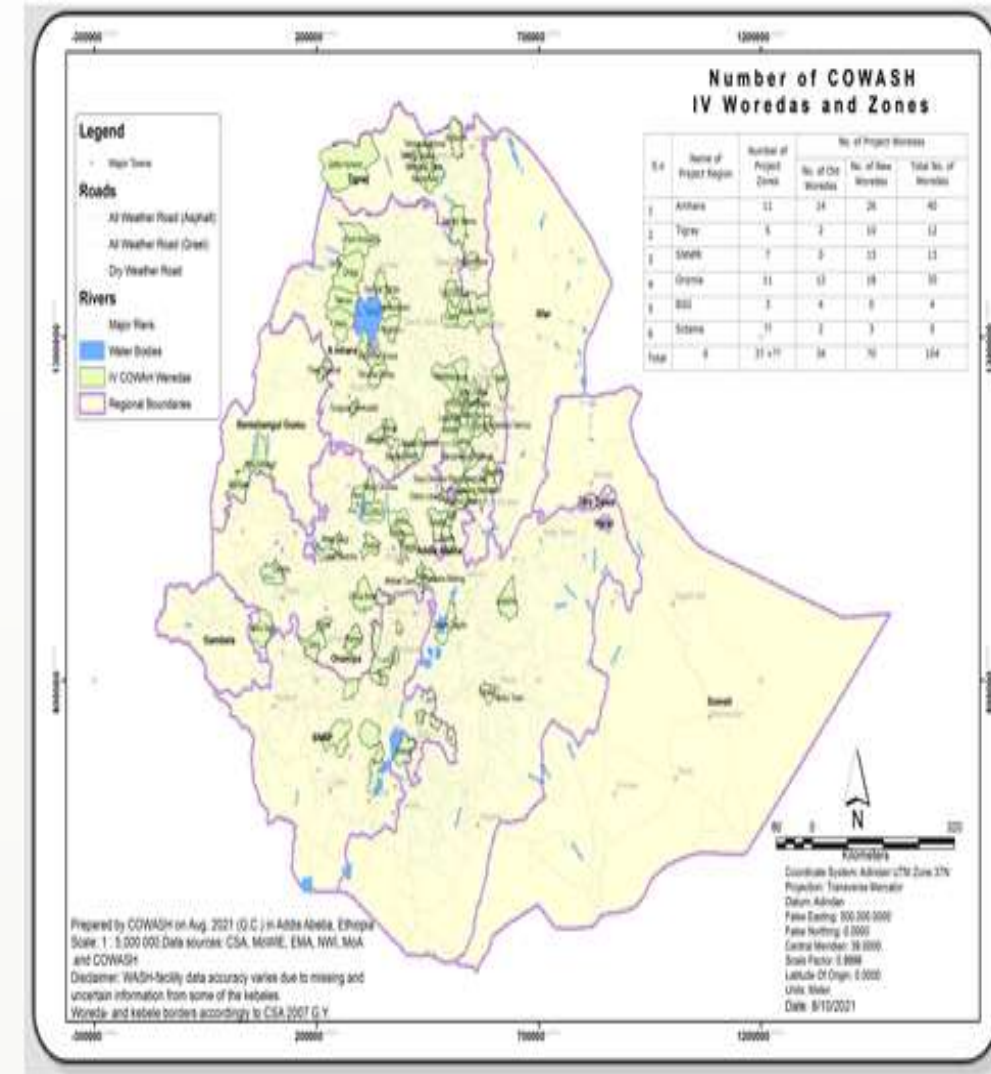
Adama

Objective of the presentation

- To aware stakeholders on the COWASH IV focus in institutional WASH (water & latrines) facilities implementation
- To aware stakeholders in the use of the **Woreda Managed Projects (WMP)** approach in institutional WASH implementation.
- To make sure that the institutional latrine designs (**especially for schools**) to be used in COWASH IV are inline with recent manuals of MoH/BoH and MoE/BoE.

1. COWASH IV: Objective and Outcomes

- **COWASH Accelerated WASH** (Communally-Led WASH) is a bilateral WASH project b/n the GoE and GoF.
- Since April 1/2021, the Fourth phase of the project which is going to be implemented until end of December 2024 has been started.
- To be implemented in 104 woredas in 6 regions (Amhara, BG, Oromia, SNNP, Sidama & Tigray).



2. Institutional WASH implementation in COWASH IV.

- **One of the 5 outcomes of COWASH IV which delas with institutional WASH is Outcome 3.**
- **Outcome 3. Improved institutional WASH by narrowing the gap in improved institutional latrine, climate resilient safe water supply, and MHM.**
- **In order to contribute to the outcome, implementation of water supply schemes, latrines and menstrual hygiene management (MHM) facilities are important.**

2. Major principles in Institutional WASH implementation

a) General

- The implementation of water supply & latrines for schools & health facilities follow the **Woreda Managed Project (WMP)** approach. That is **woreda sector offices** are responsible for the **procurement, financial management & contract administration** for the implementation.
- There is **no community contribution expected from the institutions** (all the construction cost is a grant from the project).

b) Approaches for sustainability of WASH facilities

- Although institutional WASH implementation in COWASH IV does not follow the full CMP approach, some of the cycles in CMP approach which have role for sustainability of WASH facilities shall be followed such as:
 - Implementation fully depend on institutions own initiative (application to the WWT).
 - project appraisal by woreda experts,
 - approval of the project application by WWT,

2. Major principles in Institutional WASH implementation

- **Institutions have to demonstrate both their willingness & capacity to cover the O&M cost. The possible options can be:-**
 - Guarantee letter from the institution to manage the O&M of the facilities including the possible sources of O&M fund, or
 - Certified copy of the institution annual budget clearly showing the allocation for O&M for WaSH facilities.
- **NB. Upfront cash contribution for O&M is not mandatory.**
- **The Parents & Teachers Association (PTAs) and Health Committees (HCs)** are expected to follow the progress of construction, and the O&M of the facilities.

2. Major principles in Institutional WASH implementation

c) Source of Fund

The source of fund is a grant from **GoE or GoF**. As per the project document:-

c.1) The construction of water schemes to institutions where they already have standard latrine but **do not have safe water supply**, the cost of the water supply can be covered from **GoF**.

c.2) For the construction of latrines or MHM for institutions which already have safe water supply or the construction of full WASH packages (both water supply & latrines) for institutions, the fund is from the regional contribution (**GoE**).

d) Investment Fund Transfer

- The fund for the construction of institutional WASH facilities (water supply, latrines & MHM) are transferred directly to the Woreda Office of Finance (WoF) from the region via Commercial Bank of Ethiopia (CBE).

2. Major principles in Institutional WASH implementation

e) Contract and Fund Management

The fund for the implementation of institutional WASH facilities is managed by **woreda finance office (WoF)**. But contract is managed as:-

- the contract administration/management for institutional **water supply** implementation is handled by the **woreda water office (WoW)**,
- the contract management for **school sanitation facilities** is handled by the **woreda office of education (WoE)**, and
- the contract management for **health institutions sanitation** implementation is handled by the **woreda office of health (WoH)**.

f) Procurement procedure

- The procurement (for goods and services) follows the GoE Procurement and Property Administration Proclamation no 649/2009 and the Government Public Procurement Directive issued by the then MoFED in June 2010 which each region adapted to its specific condition

3. Institutional water supply technologies to be implemented by COWASH

Water supply technologies to be implemented in schools and health facilities (health post & health center) depending on the feasibility of the source are:

- New or rehabilitation of HDW with hand pump with Handwash facility
- New or rehabilitation on Spot SPD with Handwash facility
- New or rehabilitation of SPD with collection chamber (CC) with Handwash
- New or rehabilitation of SWs with hand pump with Handwash facility
- New or rehabilitation of Rural piped scheme (RPS) from gravity spring with Handwash facility
- New or rehabilitation of RPS from deep well source with Handwash facility
- New or rehabilitation of RPS from Motorized Spring with Handwash facility
- New or rehabilitation of SW or DW drilling fitted with solar pump where feasible
- Expansions from existing water system with handwash facility
- New Roof Water Harvesting (RWH)

4. Institutional sanitation facilities/latrines to be implemented in COWASH

4.1 Health institutions sanitation/latrine designs in COWASH IV

A)Health Institution Sanitation Facilities. Basing on the manual:-

“Health Centre & Health Post Water Supply, Sanitation and hygiene facilities design & implementation manual June 2012” by MoH.

Health Center sanitation facility components are: -

- 5 seats inclusive latrine with MHM inside & with hand wash facility
- Incinerator
- Placenta pit

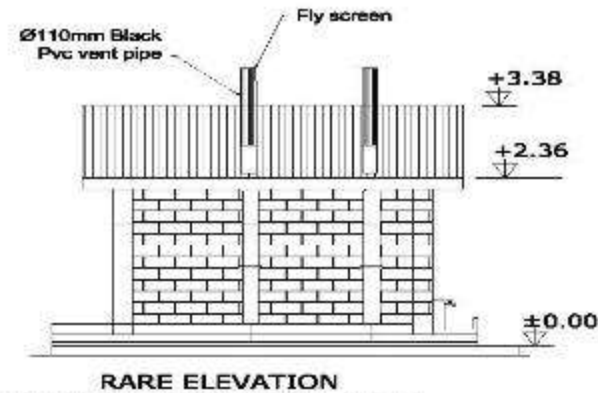
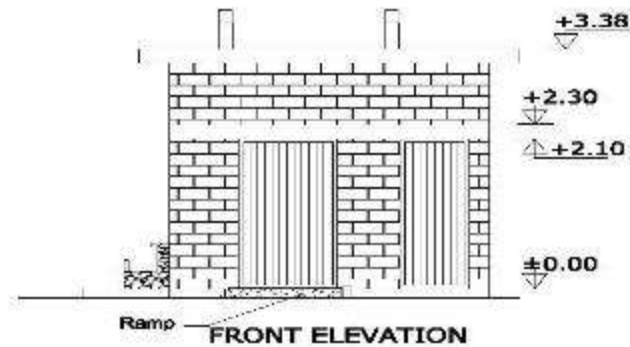
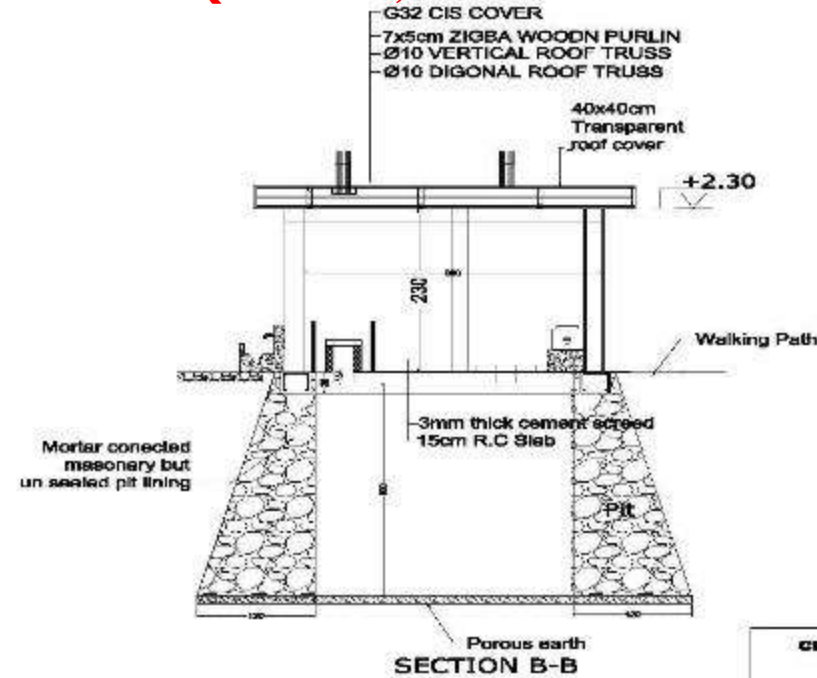
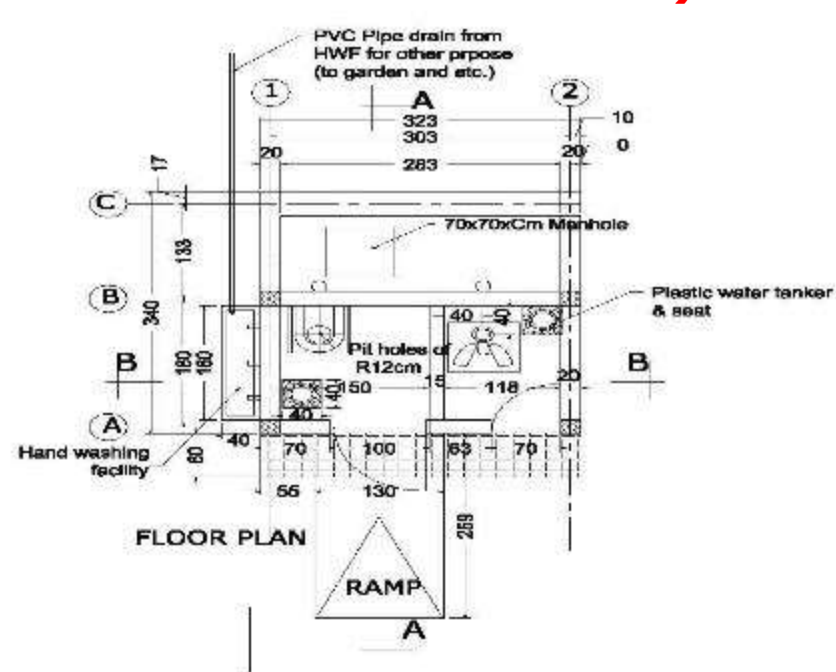
Health Post sanitation facility components are: -

- 2 seats inclusive latrine with MHM inside & with hand wash facility
- Incinerator (optional)
- Placenta pit (optional)


NB. Oromia BoH will provide designs & Bill of quantities to W oH.

4.1 Health institutions sanitation/latrine designs in COWASH IV

4.1.1) Health Post Latrine (2 Seats)

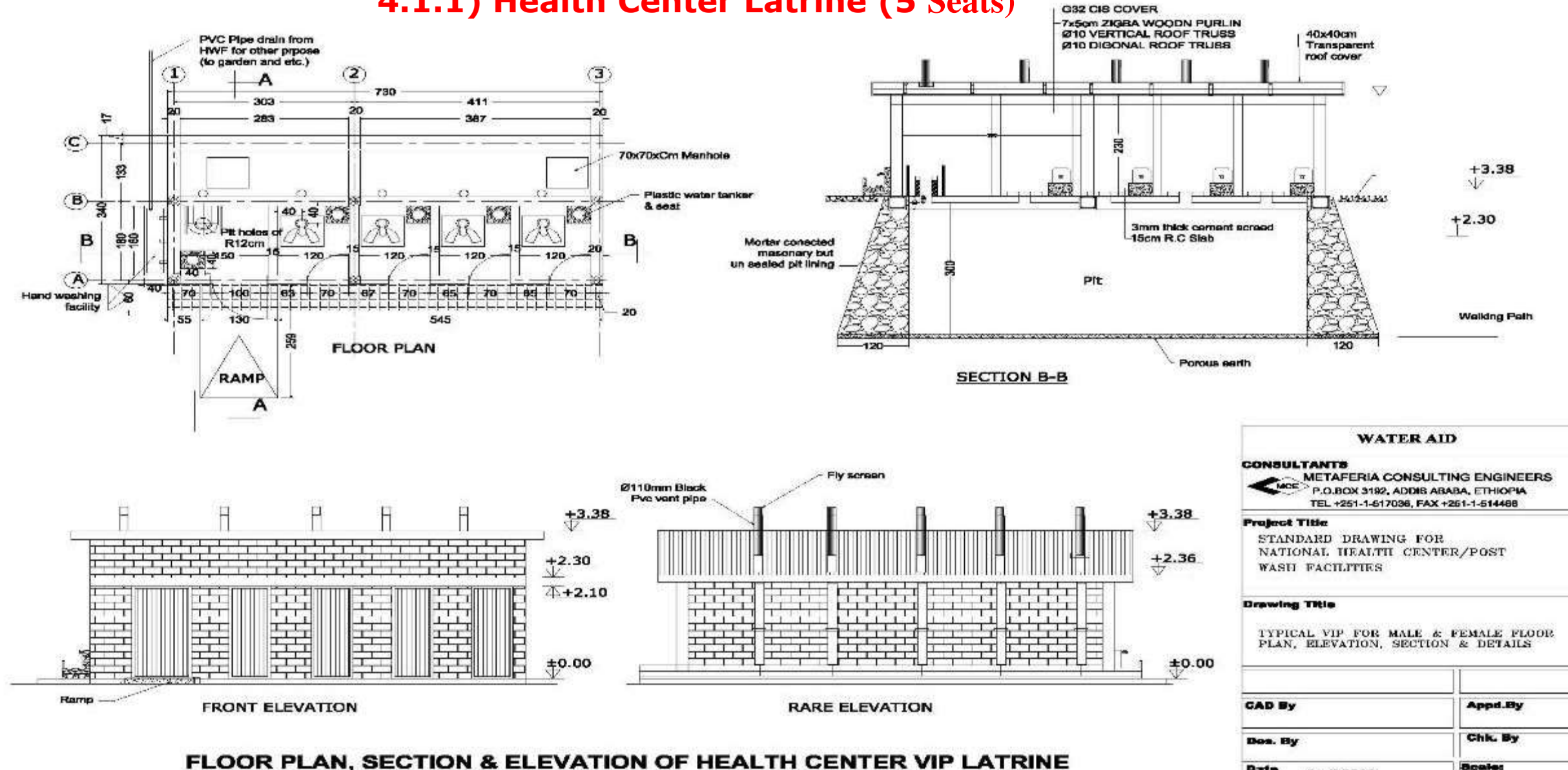


PLAN & SECTION OF HEALTH POST VIP LATRINE

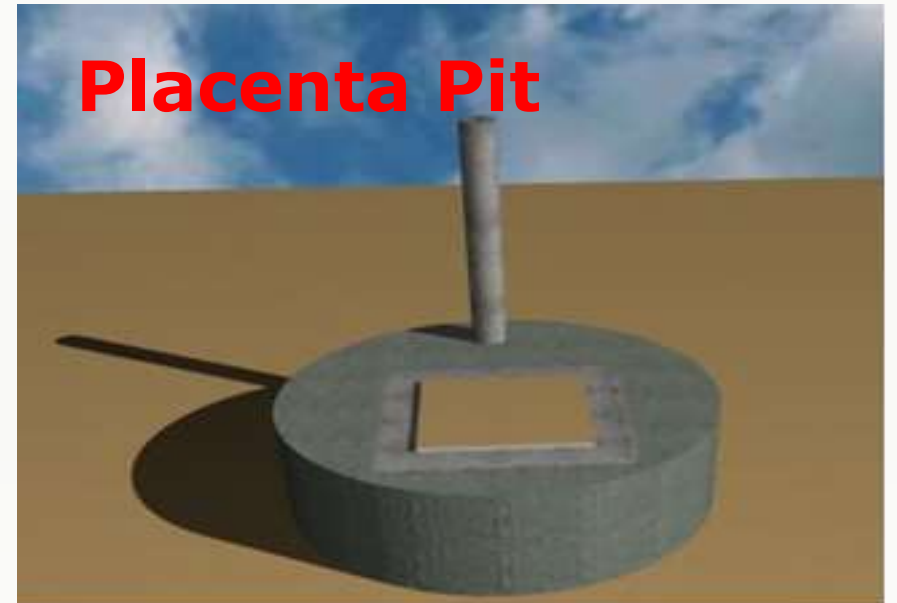
CLIENT		WATER AID	
<hr/>			
CONSULTANTS			
 METAERIA CONSULTING ENGINEERS			
P.O.BOX 3152, ADDIS ABABA, ETHIOPIA			
TEL +251-1-617090, FAX +251-1-614468			
<hr/>			
Project Title			
STANDARD DRAWING FOR NATIONAL HEALTH CENTER/POST WASH FACILITIES			
<hr/>			
Drawing Title			
HEALTH POST VIP FOR MALE & FEMALE FLOOR PLAN, ELEVATION, SECTION & DETAILS			
<hr/>			
CAD By		Appd. By	
<hr/>		<hr/>	
Des. By		Chk. By	
<hr/>		<hr/>	
Date		Scale:	
April 2012		<hr/>	
Dwg. No.		Sheet No.	PAGE No.
WA/HE/16		01/03	16

4.1 Health institutions sanitation/latrine designs in COWASH IV

4.1.1) Health Center Latrine (5 Seats)



4.1 Health institutions sanitation/latrine designs in COWASH IV



4. Institutional sanitation facilities to be implemented by COWASH

4.2) School Sanitation Facilities (School WASH Construction & Design Manual by MoE in November 2019). This is new to COWASH woredas.

School sanitation facility components in the manual are: -

- Latrine for boys (4,6,8 or 10) with hand wash facility.
- Latrine for girls (4,6,8 or 10) with hand wash facility.
- 3 seat latrines for teachers with hand wash facility.
- 4 rooms MHM block with hand wash facility.

The document puts different latrine design options as:

- **Pit type:** Composting type or latrine with piped water/flushing type/,
- **Number of seats:** 4, 6, 8 or 10 seats
- **Soil types:** normal soil, rocky areas or swampy areas

NB. Bureau of Education (Contact Ato Teferi) will share the designs & Bill of Quantities to Woreda Education Offices.

4.2 School WASH Facilities Package in COWASH

a) For teachers

- Hollow concrete block (HCB) made 3 seats composting or flush type latrine (with ramp, hand rail, one room with disability friendly seat & wide door).
- Hand washing facility

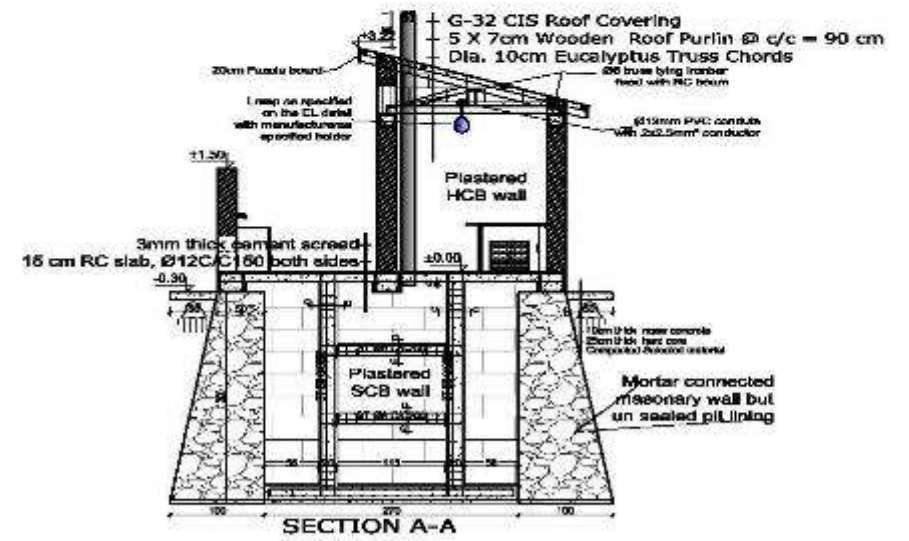
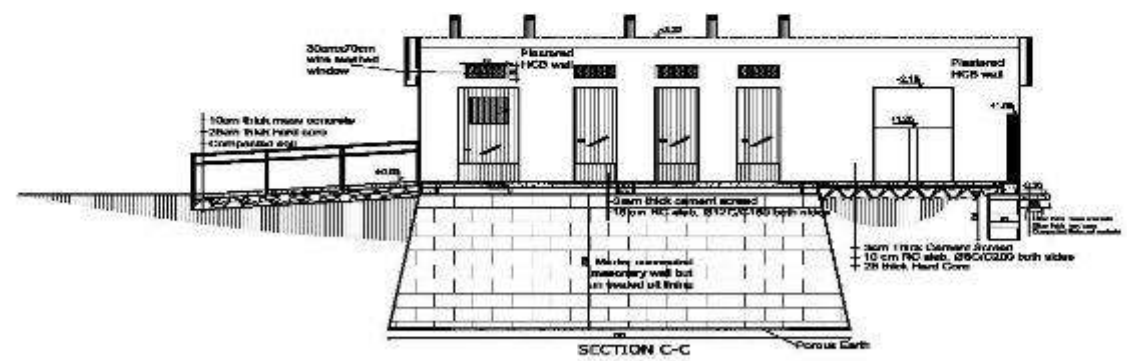
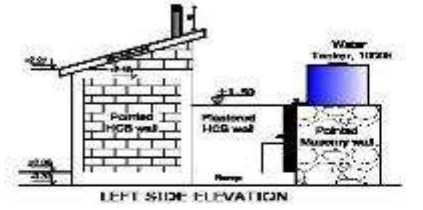
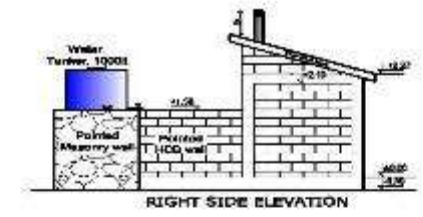
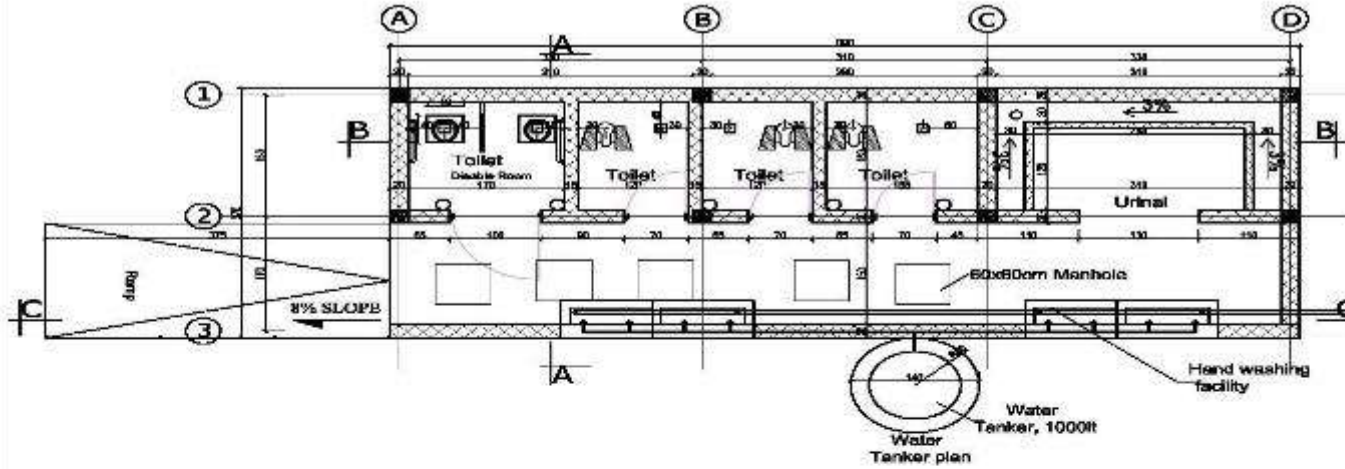
b) For boy students

- HCB made 4 seats composting type or flush type latrine (with ramp, hand rail, one room with disability friendly seat & wide door).
- Urinal (urination facility).
- Hand washing facility

c) For girl students

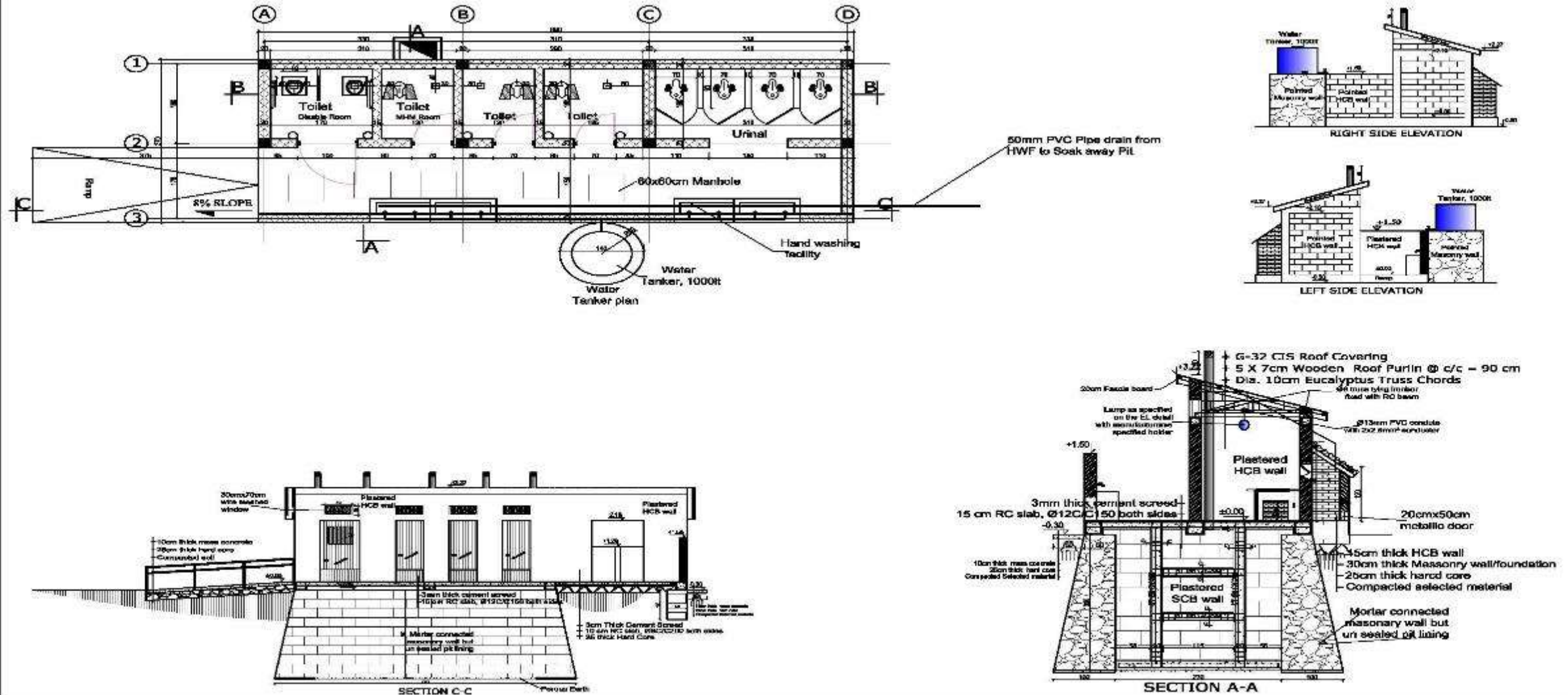
- HCB made 4 seats composting or flush type latrine (with ramp, hand rail, one room with disability friendly seat & wide door).
- Urinal (urination facility).
- Hand washing facility.
- HCB made 4 rooms block Menstrual Hygiene Management (MHM) with hand wash.

4.2 School WASH Facilities Package in COWASH (4 seat boys)



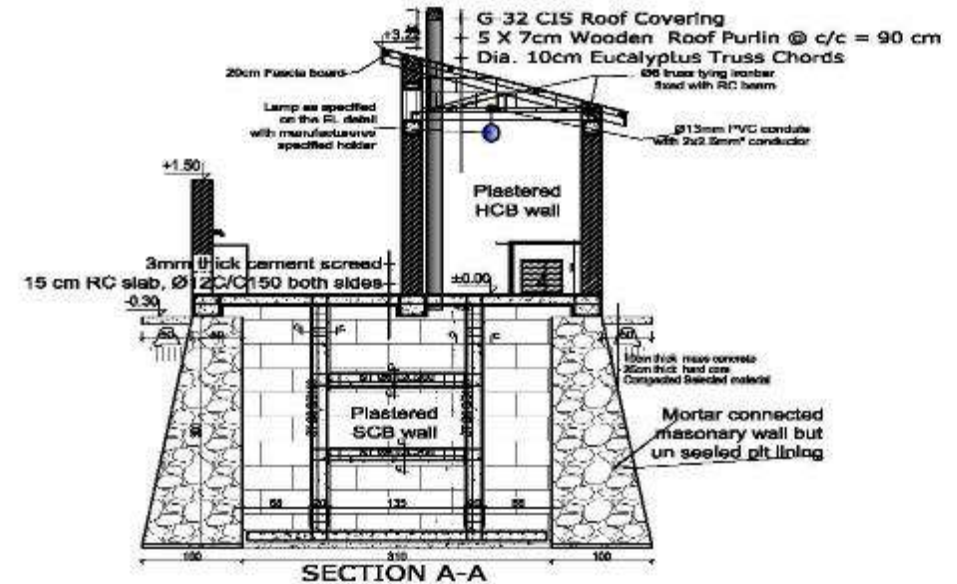
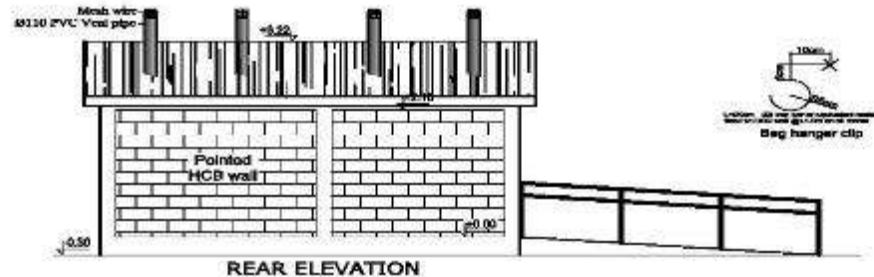
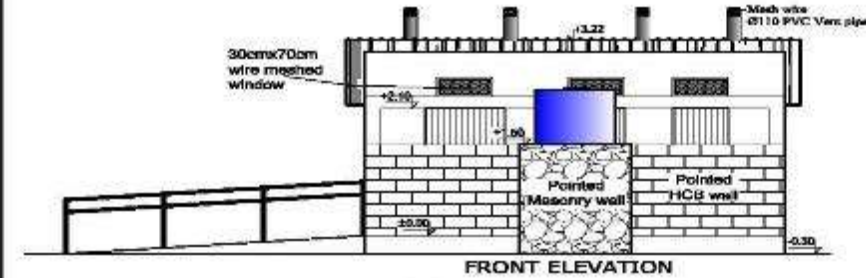
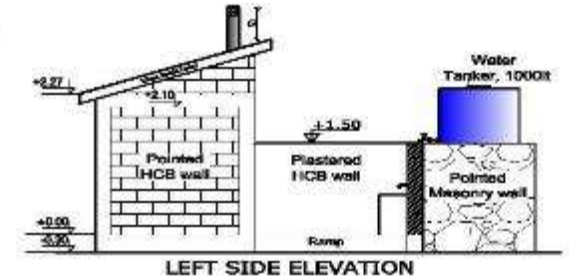
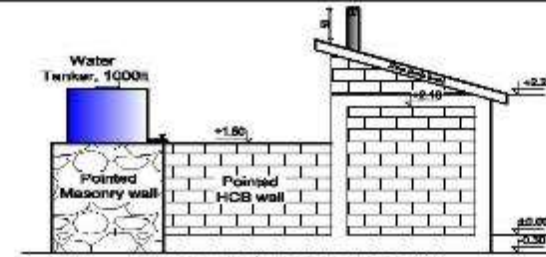
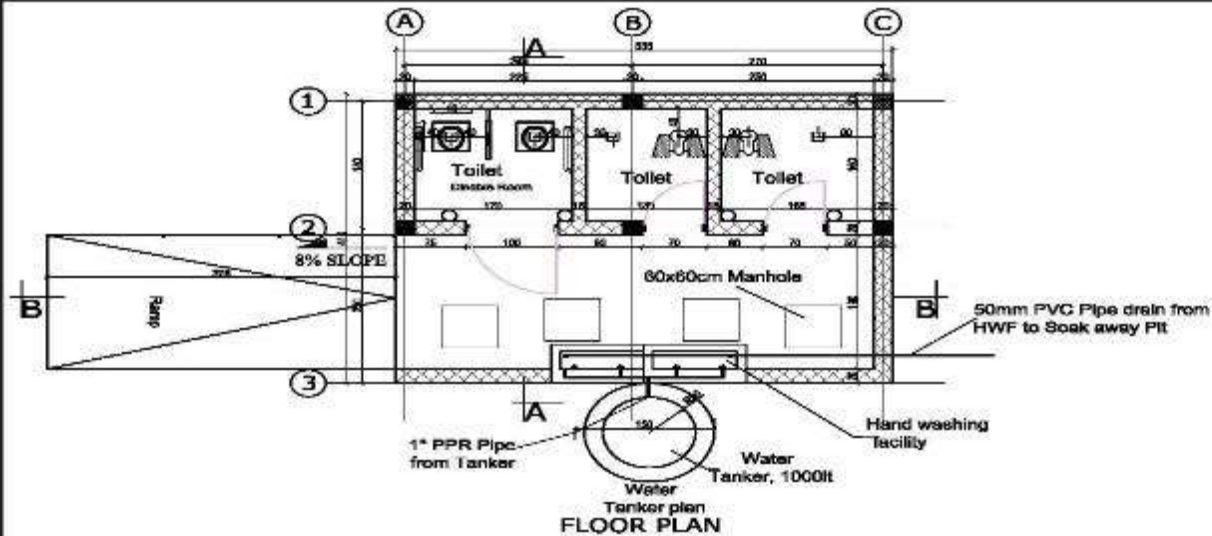
PROJECT DESIGN & CONSTRUCTION MANUAL FOR WATER SUPPLY AND SANITARY FACILITIES IN PRESCHOOL, PRIMARY & SECONDARY SCHOOLS IN ETHIOPIA	OWNER MINISTRY OF EDUCATION (MoE)	DESIGNED BY Lawan Abebe DRAWING TITLE 4 SEAT COMPOSTING TYPE DRY PIT LATRINE FOR BOYS	DAD BY: Masfin Habtemariam SCALE AS SHOWN DATE JULY, 2019 01/03
--	--	--	---

4.2 School WASH Facilities Package in COWASH (4 seat girls)



PROJECT DESIGN & CONSTRUCTION MANUAL FOR WATER SUPPLY AND SANITARY FACILITIES IN PRESCHOOL, PRIMARY & SECONDARY SCHOOLS IN ETHIOPIA	OWNER MINISTRY OF EDUCATION (MoE)	DESIGNED BY Lawan Abebe	CAD BY. Mesfin Habtemariam	
		DRAWING TITLE 4 SEAT COMPOSTING TYPE DRY PIT LATRINE FOR GIRLS	SCALE AS SHOWN	DATE JULY, 2019
				01/03

4.2 School WASH Facilities Package in COWASH (3 seat teachers)



PROJECT
DESIGN & CONSTRUCTION MANUAL FOR WATER SUPPLY AND
SANITARY FACILITIES IN PRESCHOOL, PRIMARY & SECONDARY
SCHOOLS IN ETHIOPIA

OWNER
MINISTRY OF EDUCATION (MoE)

DESIGNED BY	Mesfin.H PE-634
DRAWING TITLE	3 SEAT COMPOSTING TYPE DRY PIT LATRINE

CAD BY. Meefin Habtemariam		
SCALE AS SHOWN	DATE JULY, 2019	01/03

4.2 School WASH Facilities Design (Composting Type)

For First year

Cubicle A uses pit a

Cubicle B uses pit c

Cubicle C uses pit e

Cubicle D uses pit e, etc

For second year original squat
holes sealed

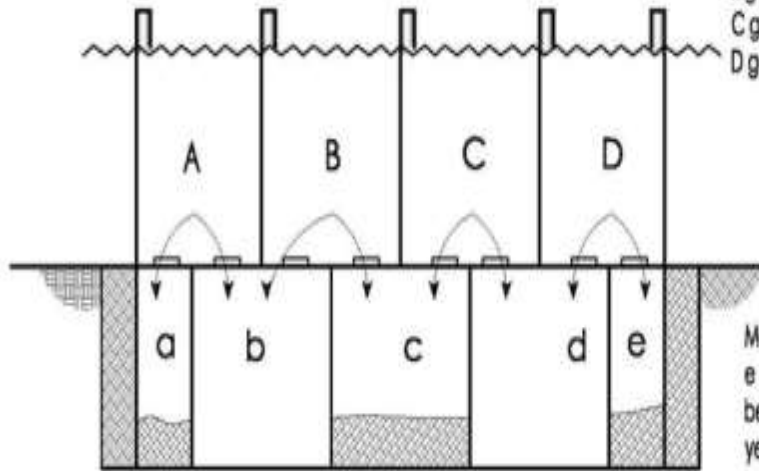
Second hole opened

A goes to pit b

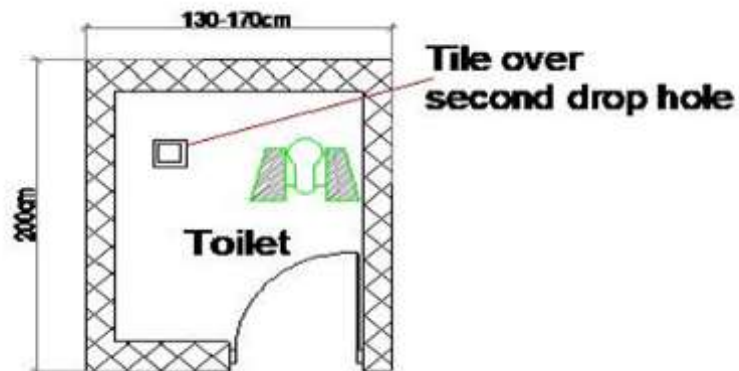
B goes to pit b

C goes to pit d

D goes to pit d, etc



Meanwhile material in pits a,c +
e composts for 1 year before
being empty. At beginning of
year 3 cycle repeats.



The recent MoE dry pit/composting type latrine design.

As compared to old design the pit partitions have concrete
footings and concrete columns in addition to solid HCB.

4.2 School WASH Facilities Design (Flushing Type)

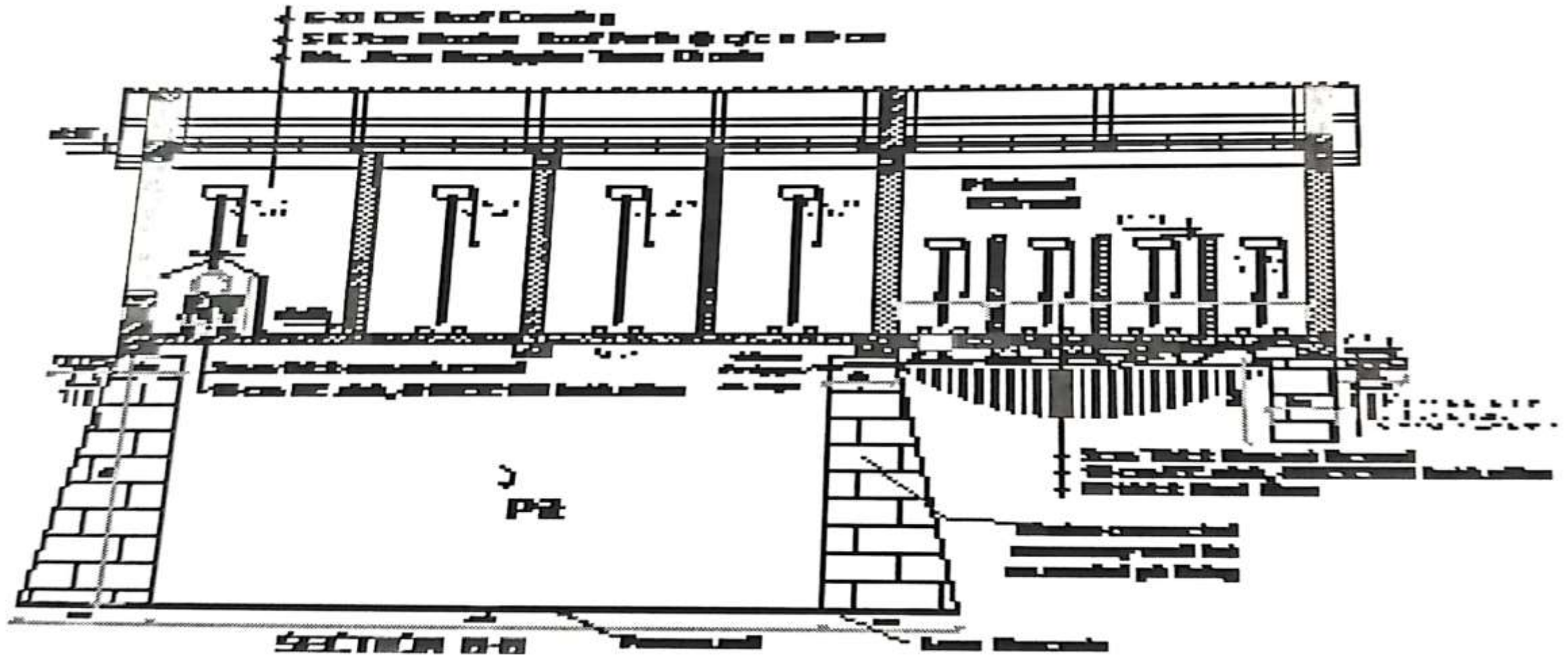
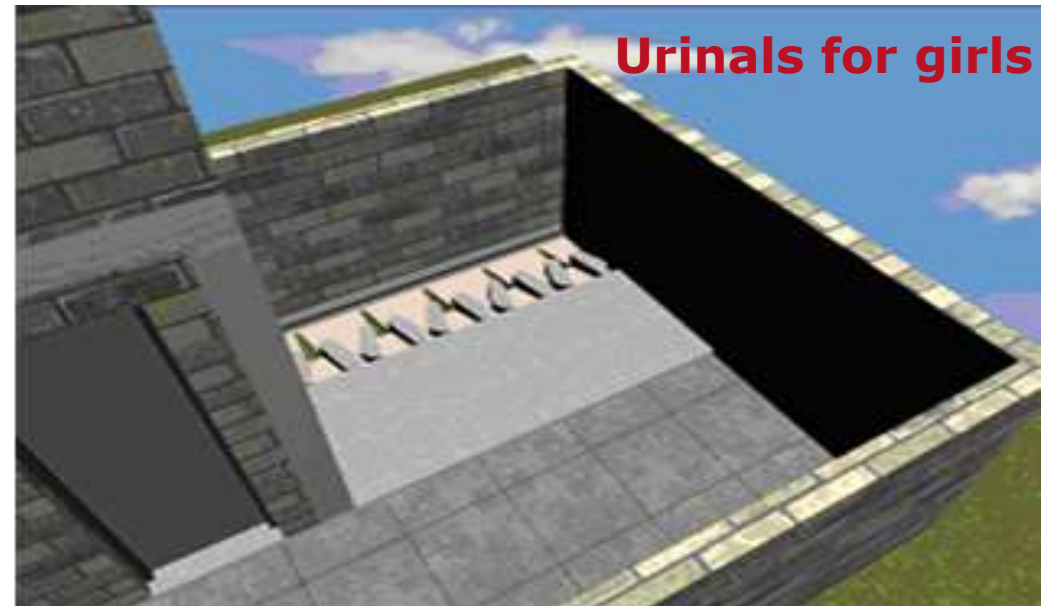
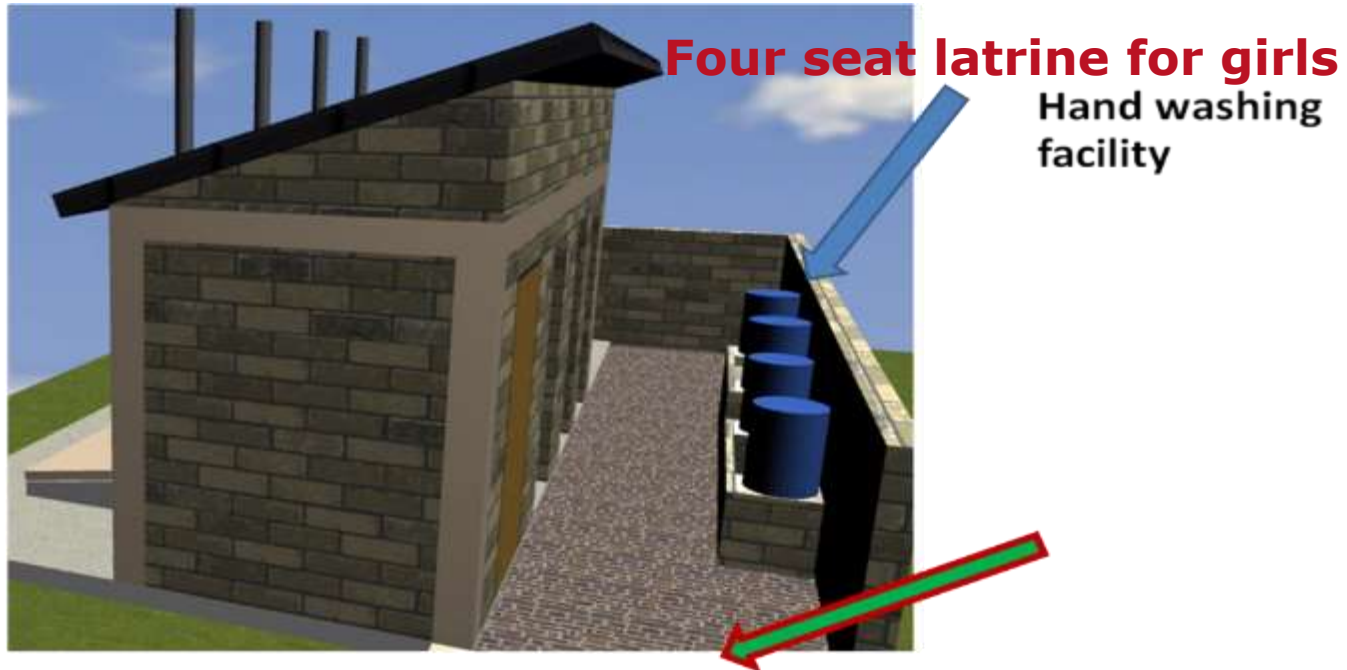
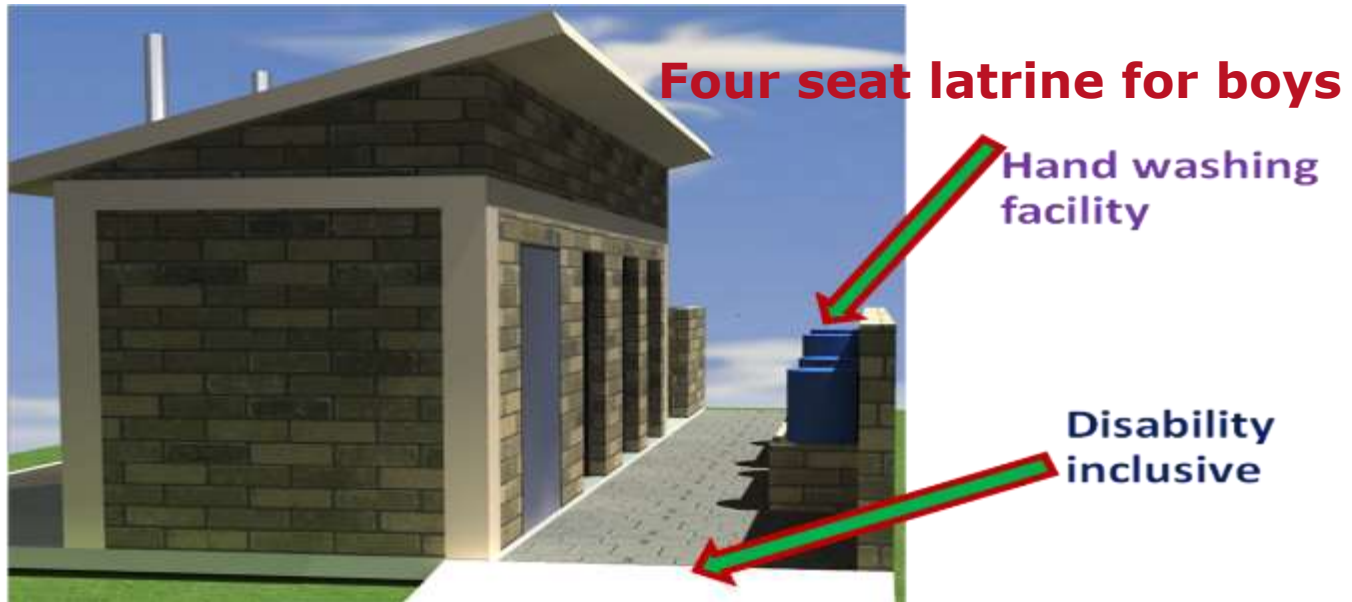


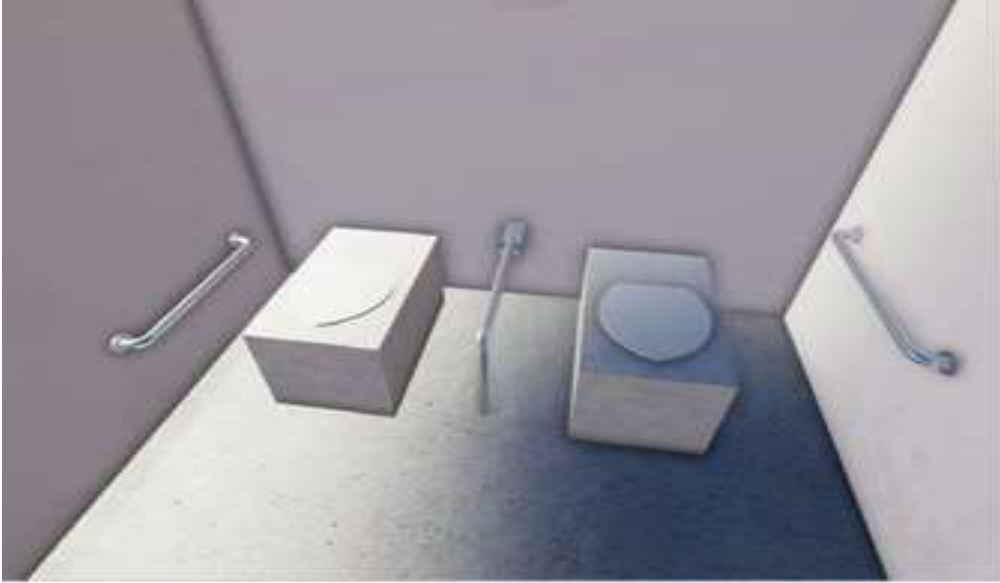
Figure: The recent MoE Flushing type latrine (No Partition wall in the toilet holes/pits)

This can be used also as **dry pit latrine when there is possibility of emptying latrine when full.**

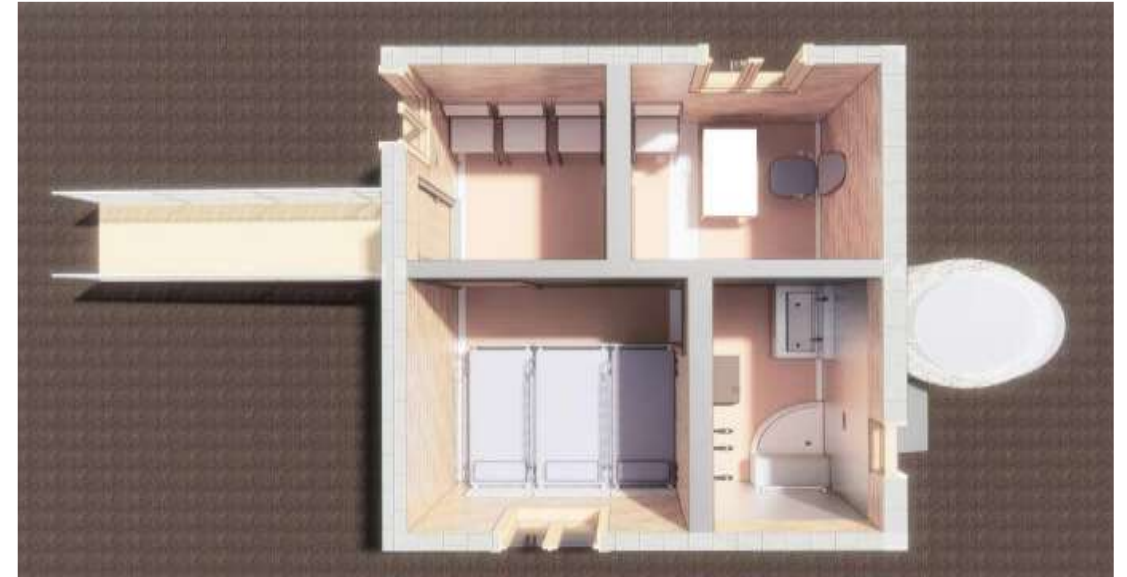
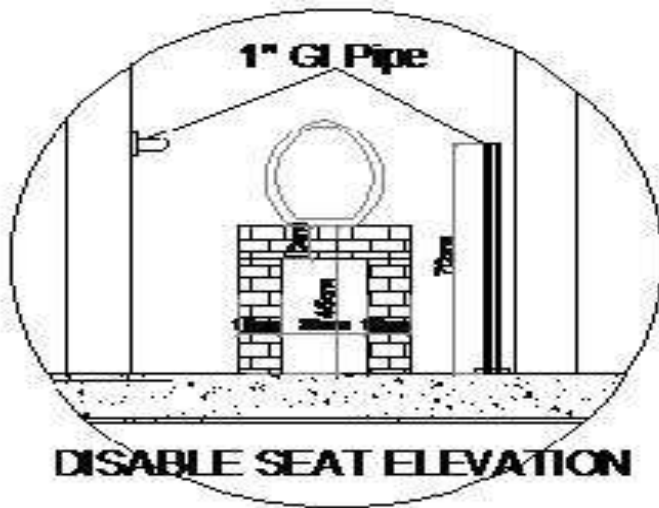
4.2 School WASH Facilities Package in COWASH



4.2 School WASH Facilities Package in COWASH



Disability friendly toilet seat

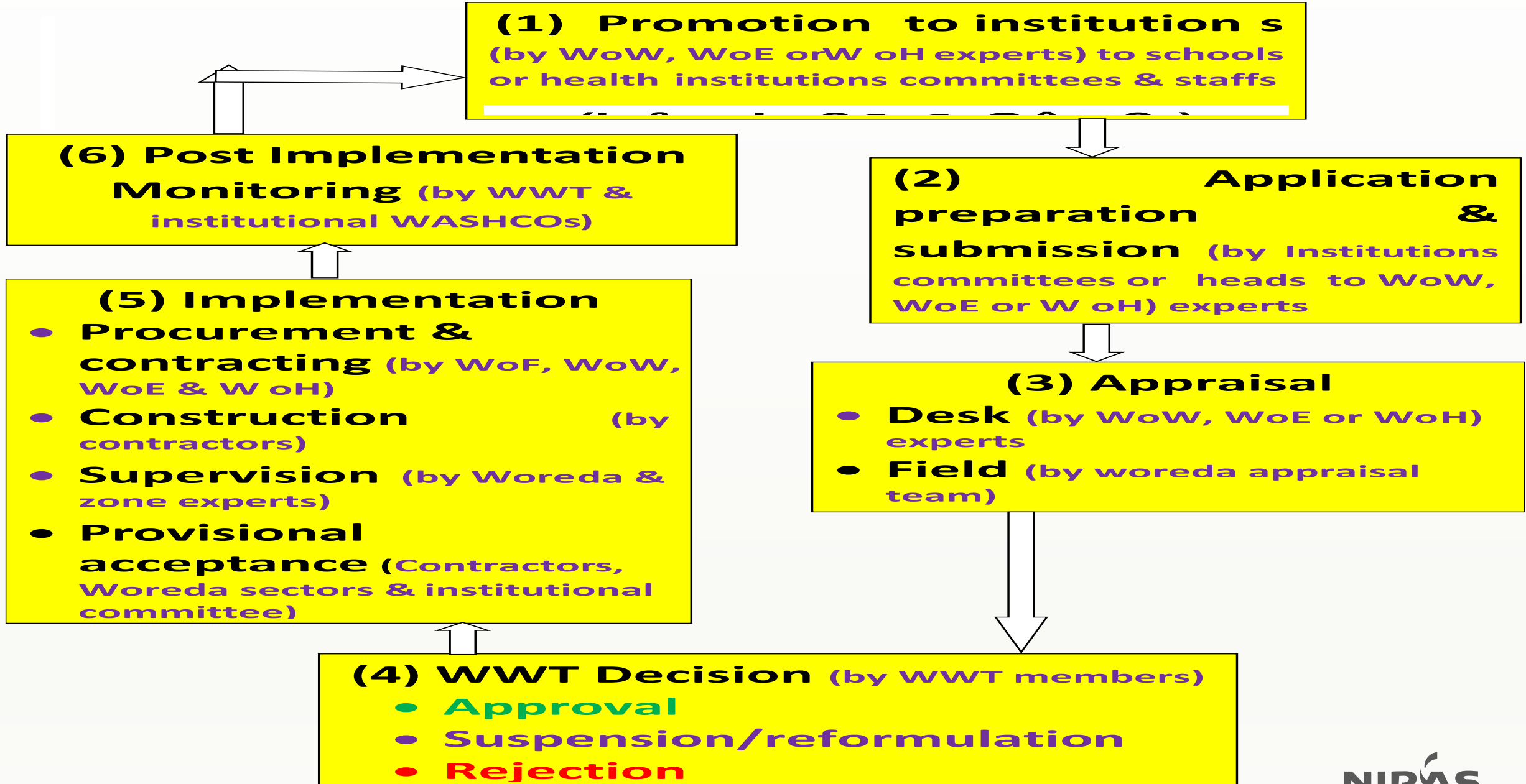


Plan of MHM building



Front elevation of MHM building

5. Institutional WASH implementation using WMP approach



5. Institutional WASH implementation using WMP approach

5.1 Eligibility of applicants (Which institution may apply)

- a) The institution has to be primary school (up to grade 8), health post or health centres.
- b) Application for water supply from an institution which does not have any water supply before will get priority.
- c) Applications for sanitation from an institution which does not have any latrine before will get priority. Institution having functional but non-standard latrines will be given the second priority.
- d) Applications for water supply and sanitation from an institution which does not have both water supply and sanitation facility.
- e) Applications for menstrual hygiene management (MHM) facility for schools which have water supply and latrines but not MHM rooms.
- f) The institution which is willing to establish or strengthen the existing WASHCO (PTAs or HCs) to follow the WASH facilities construction, and future O&M.
- g) The institution which is able to prove its commitment (presenting it in the application) how it is going to handle proper utilization, management & maintenance of the facilities.
- h) Kebele support to the project is proven by a letter from the Kebele administration.

5.2 Sectors Responsibilities in Institutional WASH Implementation

Activity	Water Supply & (Health schools)	Health Latrine	School latrines
Promotion	Water Office (WoW)	Health Office (W oH)	Education Office (WoE)
Application receiving & project filing	Water Office (WoW)	Health Office (W oH)	Education Office (W oE)
Desk Appraisal	WoW (CMP Sup.)	W oH (COWAH FP)	WoE (COWAH FP)
Field Appraisal	WoW	W oH & WoW	WoE & WoW
Approval	WWT	WWT	WWT
Tendering	WoW & WoF	W oH & WoF	WoE & WoF
Construction management	WoW	W oH	WoE

5.2 Sectors Responsibilities in Institutional WASH Implementati

Activity	Water Supply & (Health schools)	Health Latrine	School latrines
Construction supervision	WoW	W oH & WoW	WoE & WoW
Payment Certificate Approval	Water Office (WoW)	Health Office (W oH)	Education Office (W oE)
Payment effecting	WoF	W oF	WoF
Provisional acceptance	WoW	W oH	WoE

NB. If there is construction office at the woreda, it can be involved in the activities where it is mandated (tendering, supervision, payment approval etc...)

5.3 WMP Cycle in Institutional WASH implementation Formats

The formats are in English as they are used by the institutions and not by communities. If needed can be translated to Afan Oromo.

Annex F.1. Sample Institutional water supply application form.doc

Annex F.2. Sample Institutional sanitation application form.doc

Annex F.3. Sample Project follow up sheet.doc

Annex F.4. Sample Institutional WASH desk appraisal form.doc

Annex F.5. Sample Acknowledgment receipt of application.doc

Annex F.6. Sample Institutional water supply field appraisal form.doc

Annex F.7 Sample Institutional sanitation field appraisal form.doc

Annex F.8. Sample WWT project approval form.doc

5. WMP Cycle in Institutional WASH implementation

5.4 Training of stakeholders in Operation & Maintenance (O&M) of WASH facilities

- Once the construction of the WASH facility is completed, training of stakeholders in O&M of the institutional WASH facilities is very important.
 - In schools training of PTAs, school administration staffs, WASH and gender clubs, cleaners/janitors, guards and water operators (depending on the type of water supply technology) be given appropriate training to properly operate, use and maintain the facilities.
 - In health institutions training of health committees, health institution administrative staff, water scheme operators (depending on the type of water supply technology) and cleaners be given appropriate training to properly operate, use and maintain the facilities.

6. Support from Zone Sector Departments & Bureaus

- The departments & bureaus to give support to woredas when needed are:
 - Zone water department and water bureau.
 - Zone education departments and education bureau.
 - Zone health department and health bureau.
 - Zone finance department and finance bureau
 - Zone construction department and construction bureau.
- Supports expected from zones & bureaus upon request of woredas: -
 - Site selection for well drilling & design of rural piped schemes (RPS).
 - Tender document preparation & cost estimation for latrines & water schemes.
 - Tender analysis for contracting of latrines & water schemes construction.
 - Construction supervision of institutional latrines and water schemes.
 - Especially as the new school latrine design needs experienced engineers, supervision support from zone or bureau level experts is

Thank You!