

2008 EFY communal and institutional water points in Dirre Inchini-woreda in Oromia

COWASH-supported kebeles and facilities highlighted

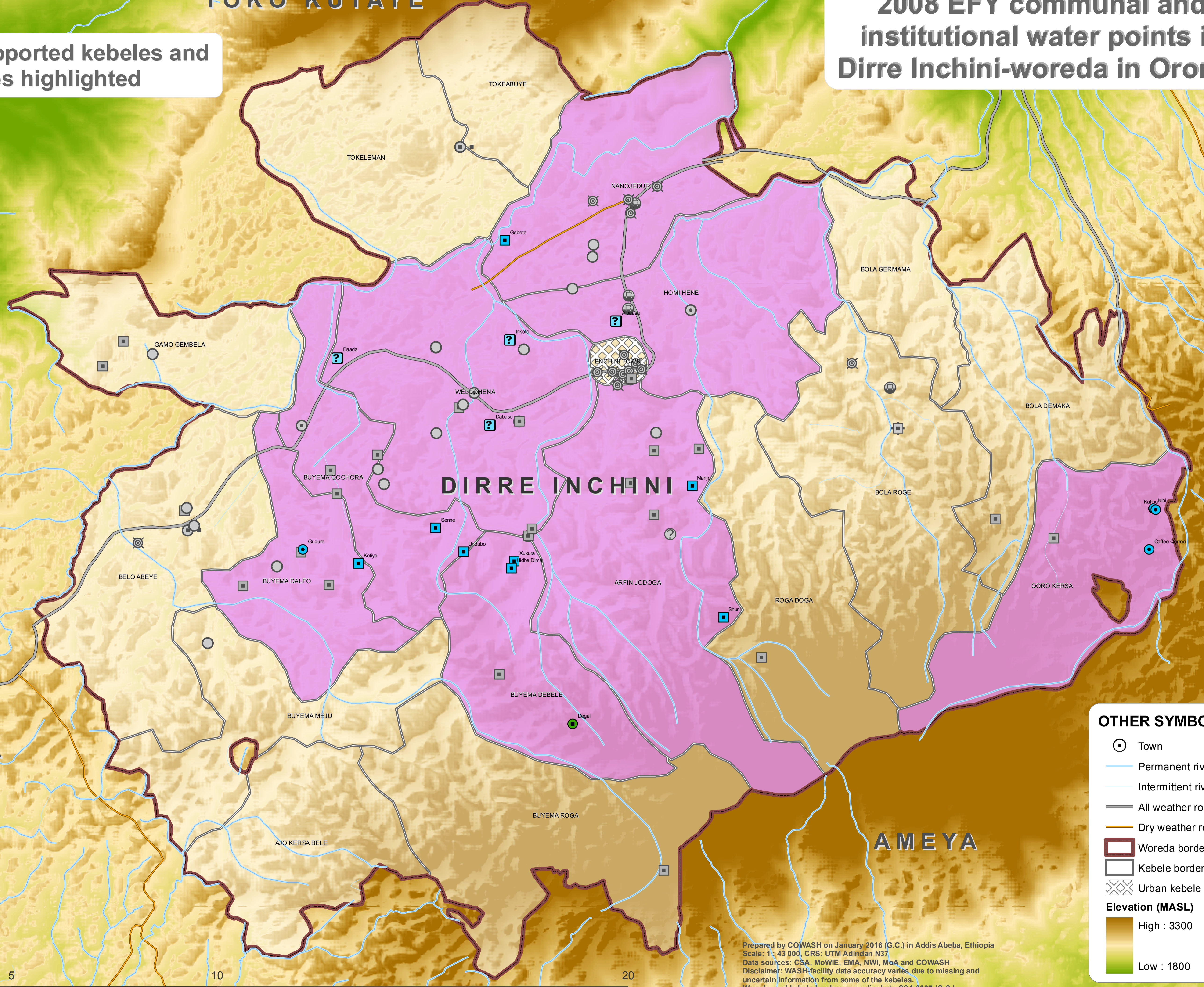
LEGEND

- COWASH kebele
- COWASH-communal water points**
 - Hand dug well
 - Shallow well
 - Protected spring
 - Other
- COWASH-shool facility**
 - Protected well/spring
- Non-COWASH-facility**
 - Deep Well with Distribution
 - Shallow Well
 - Spring with Distribution Small
 - Protected on-spot Spring
 - Hand Dug Well Normal Pump
 - Pipeline connection
 - Protected Well/Spring
 - Shallow well fitted with pump
 - Other Safe water source



OTHER SYMBOLS


- Town
- Permanent river
- Intermittent river
- All weather road
- Dry weather road
- Woreda border
- Kebele border
- Urban kebele
- Elevation (MASL)**
 - High : 3300
 - Low : 1800



SHENEY TOWN

JIBAT

N



0 5 10 20 km

Prepared by COWASH on January 2016 (G.C.) in Addis Abeba, Ethiopia
 Scale: 1 : 43 000, CRS: UTM Adindan N37
 Data sources: CSA, MoWIE, EMA, NWI, MoA and COWASH
 Disclaimer: WASH-facility data accuracy varies due to missing and uncertain information from some of the kebeles.
 Woreda- and kebele borders accordingly to CSA 2007 (G.C.)
 Updated by MoWIE GIS-team on July 2017 (G.C.)