


# 2008 EFY communal and institutional water points in Gorche-woreda in SNNP

COWASH-supported kebeles and facilities highlighted

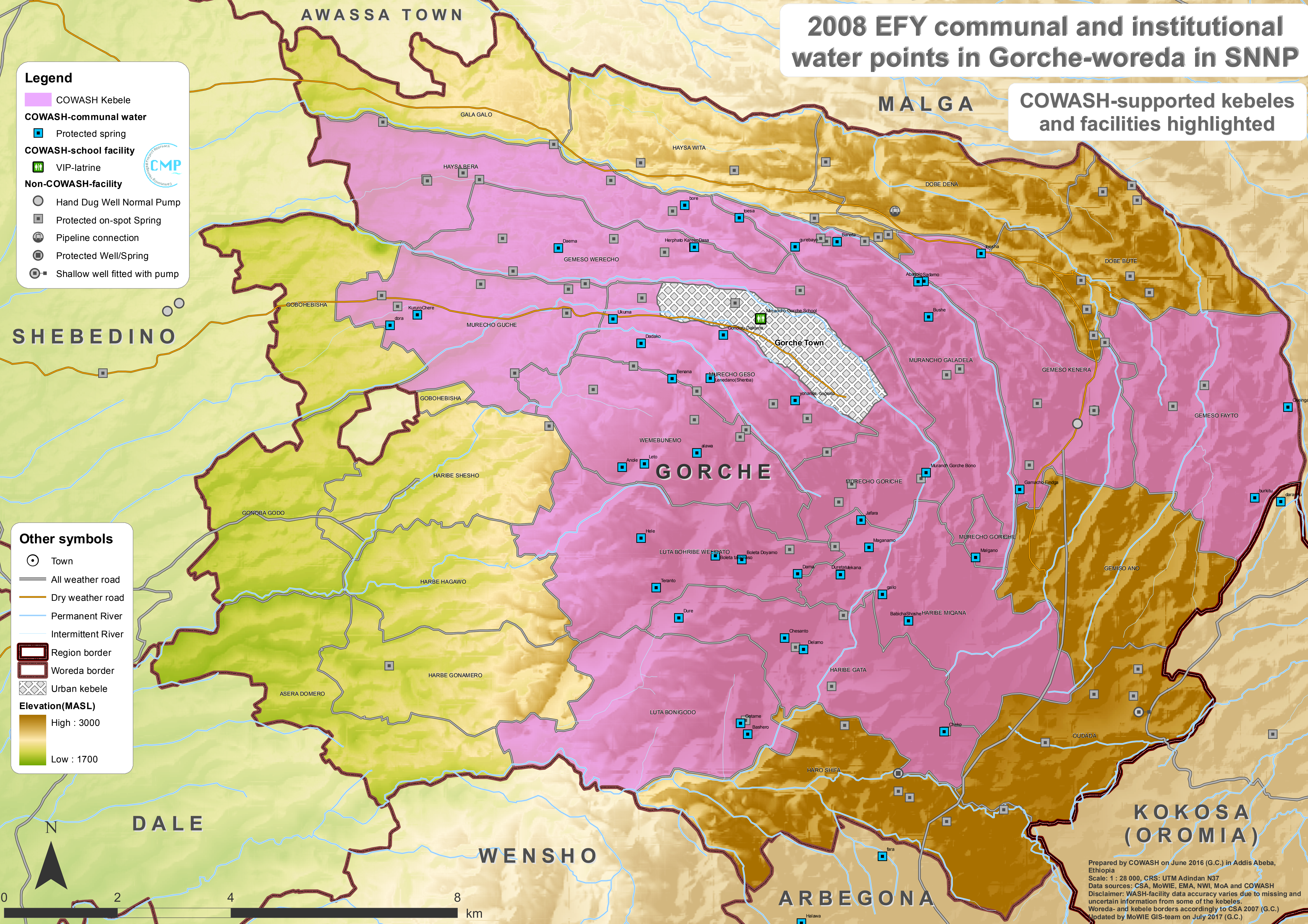
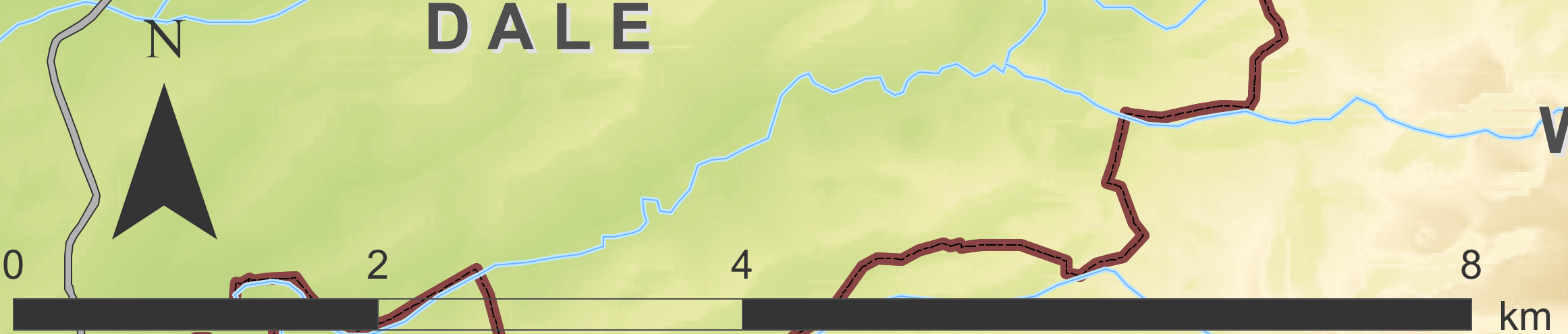
**Legend**

- COWASH Kebele
- COWASH-communal water
  - Protected spring
- COWASH-school facility
  - VIP-latrine
- Non-COWASH-facility
  - Hand Dug Well Normal Pump
  - Protected on-spot Spring
  - Pipeline connection
  - Protected Well/Spring
  - Shallow well fitted with pump



**Other symbols**

- Town
- All weather road
- Dry weather road
- Permanent River
- Intermittent River
- Region border
- Woreda border
- Urban kebele
- Elevation(MASL)
  - High : 3000
  - Low : 1700



Prepared by COWASH on June 2016 (G.C.) in Addis Abeba, Ethiopia  
 Scale: 1 : 28 000, CRS: UTM Adindan N37  
 Data sources: CSA, MoWIE, EMA, NWI, MoA and COWASH  
 Disclaimer: WASH-facility data accuracy varies due to missing and uncertain information from some of the kebeles.  
 Woreda- and kebele borders accordingly to CSA 2007 (G.C.)  
 Updated by MoWIE GIS-team on July 2017 (G.C.)