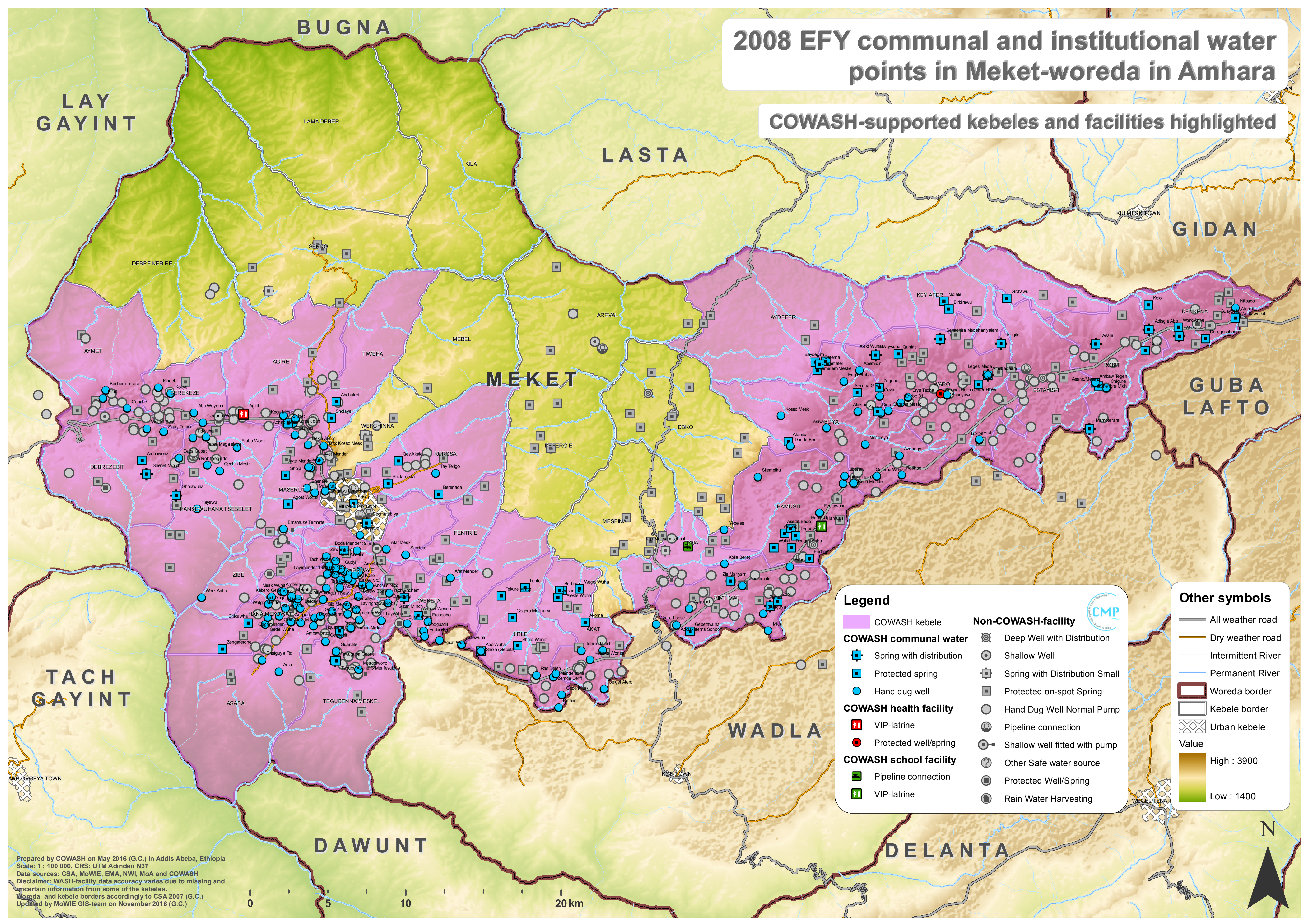


2008 EFY communal and institutional water points in Meket-woreda in Amhara

COWASH-supported kebeles and facilities highlighted



Legend

- COWASH kebele
- COWASH communal water
 - Spring with distribution
 - Protected spring
 - Hand dug well
- COWASH health facility**
 - VIP-latrine
 - Protected well/spring
- COWASH school facility**
 - Pipeline connection
 - VIP-latrine

Non-COWASH-facility

- Deep Well with Distribution
- Shallow Well
- Spring with Distribution Small
- Protected on-spot Spring
- Hand Dug Well Normal Pump
- Pipeline connection
- Shallow well fitted with pump
- Other Safe water source
- Protected Well/Spring
- Rain Water Harvesting

Other symbols

- All weather road
- Dry weather road
- Intermittent River
- Permanent River
- Woreda border
- Kebele border
- Urban kebele

Value

- High : 3900
- Low : 1400



Prepared by COWASH on May 2016 (G.C.) in Addis Abeba, Ethiopia
 Scale: 1 : 100 000, CRS: UTM Adindan N37
 Data sources: CSA, MoWIE, EMA, NWI, MoA and COWASH
 Disclaimer: WASH-facility data accuracy varies due to missing and uncertain information from some of the kebeles.
 Woreda- and kebele borders accordingly to CSA 2007 (G.C.)
 Updated by MoWIE GIS-team on November 2016 (G.C.)

