

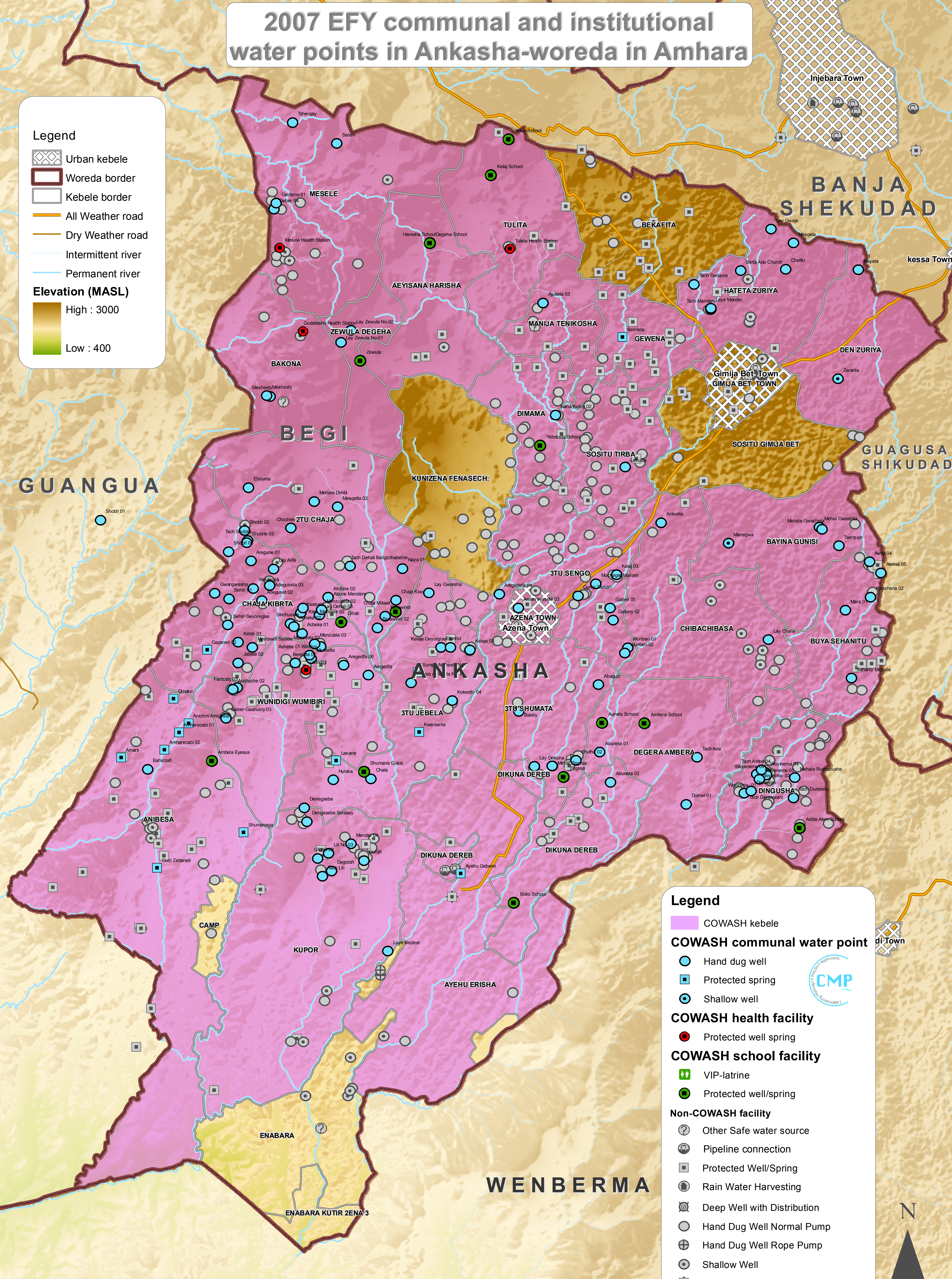
# 2007 EFY communal and institutional water points in Ankasha-woreda in Amhara

**Legend**

- Urban kebele
- Woreda border
- Kebele border
- All Weather road
- Dry Weather road
- Intermittent river
- Permanent river

**Elevation (MASL)**

- High : 3000
- Low : 400



**COWASH-supported kebeles and facilities highlighted**

Prepared by COWASH on November 2015 (G.C.). Updated by MoWIE GIS-dept. on July 2016 in Addis Abeba, Ethiopia  
 Scale: 1 : 68 000, CRS: UTM Adindan N37  
 Data sources: CSA, MoWIE, EMA, NWI, MoA and COWASH  
 Disclaimer: WASH-facility data accuracy varies due to missing and uncertain information from some of the kebeles.

**Legend**

- COWASH kebele
- COWASH communal water point**
  - Hand dug well
  - Protected spring
  - Shallow well
- COWASH health facility**
  - Protected well spring
- COWASH school facility**
  - VIP-latrines
  - Protected well/spring
- Non-COWASH facility**
  - Other Safe water source
  - Pipeline connection
  - Protected Well/Spring
  - Rain Water Harvesting
  - Deep Well with Distribution
  - Hand Dug Well Normal Pump
  - Hand Dug Well Rope Pump
  - Shallow Well
  - Spring with Distribution Small

CMP

