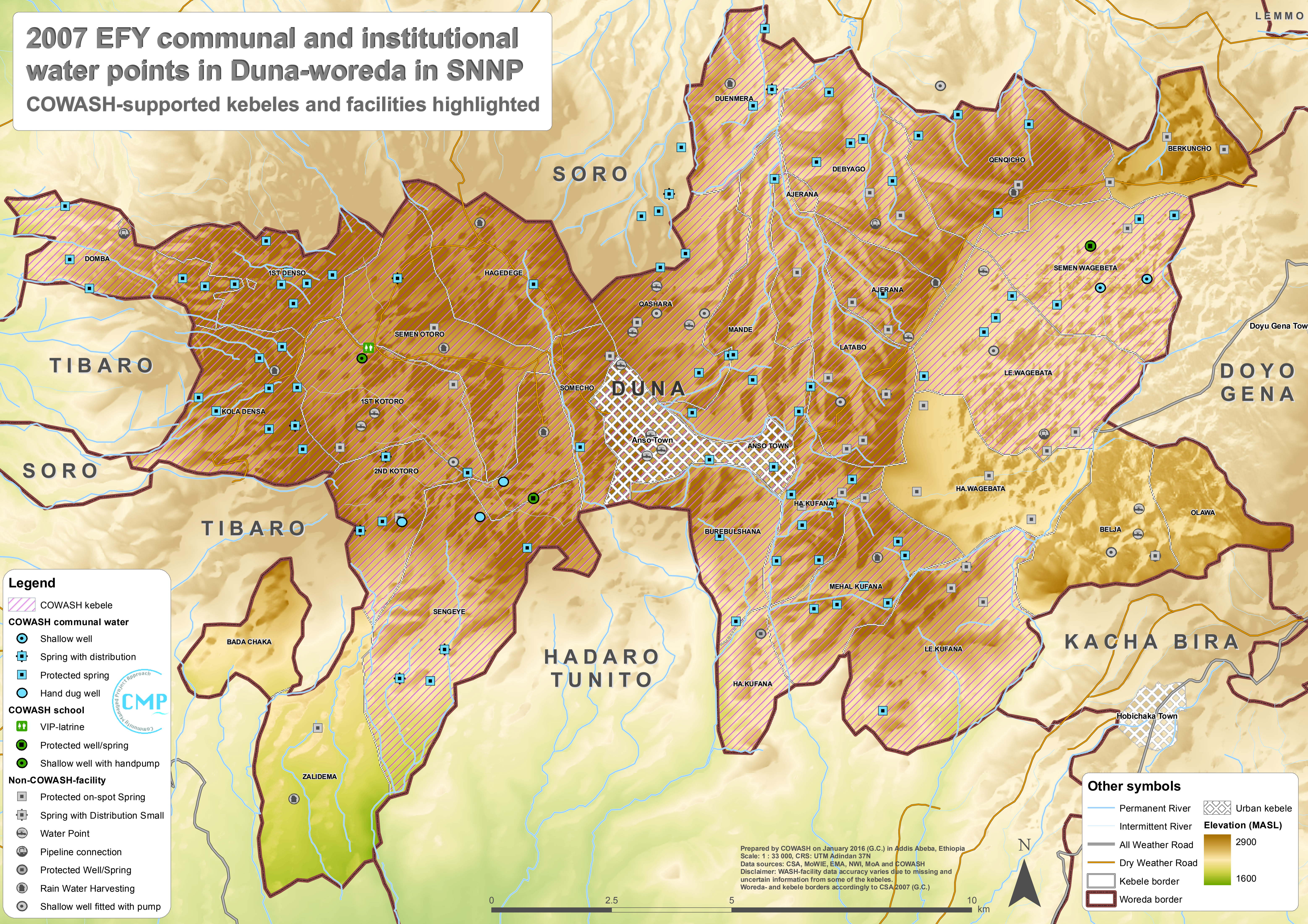


2007 EFY communal and institutional water points in Duna-woreda in SNNP

COWASH-supported kebeles and facilities highlighted



Legend

- COWASH kebele
- COWASH communal water**
 - Shallow well
 - Spring with distribution
 - Protected spring
 - Hand dug well
- COWASH school**
 - VIP-latrines
 - Protected well/spring
 - Shallow well with handpump
- Non-COWASH-facility**
 - Protected on-spot Spring
 - Spring with Distribution Small
 - Water Point
 - Pipeline connection
 - Protected Well/Spring
 - Rain Water Harvesting
 - Shallow well fitted with pump

Other symbols

- Permanent River
- Intermittent River
- All Weather Road
- Dry Weather Road
- Kebele border
- Woreda border
- Urban kebele
- Elevation (MASL)**
 - 2900
 - 1600

Prepared by COWASH on January 2016 (G.C.) in Addis Abeba, Ethiopia
 Scale: 1 : 33 000, CRS: UTM Adindan 37N
 Data sources: CSA, MoWIE, EMA, NWI, MoA and COWASH
 Disclaimer: WASH-facility data accuracy varies due to missing and uncertain information from some of the kebeles.
 Woreda- and kebele borders accordingly to CSA 2007 (G.C.)

