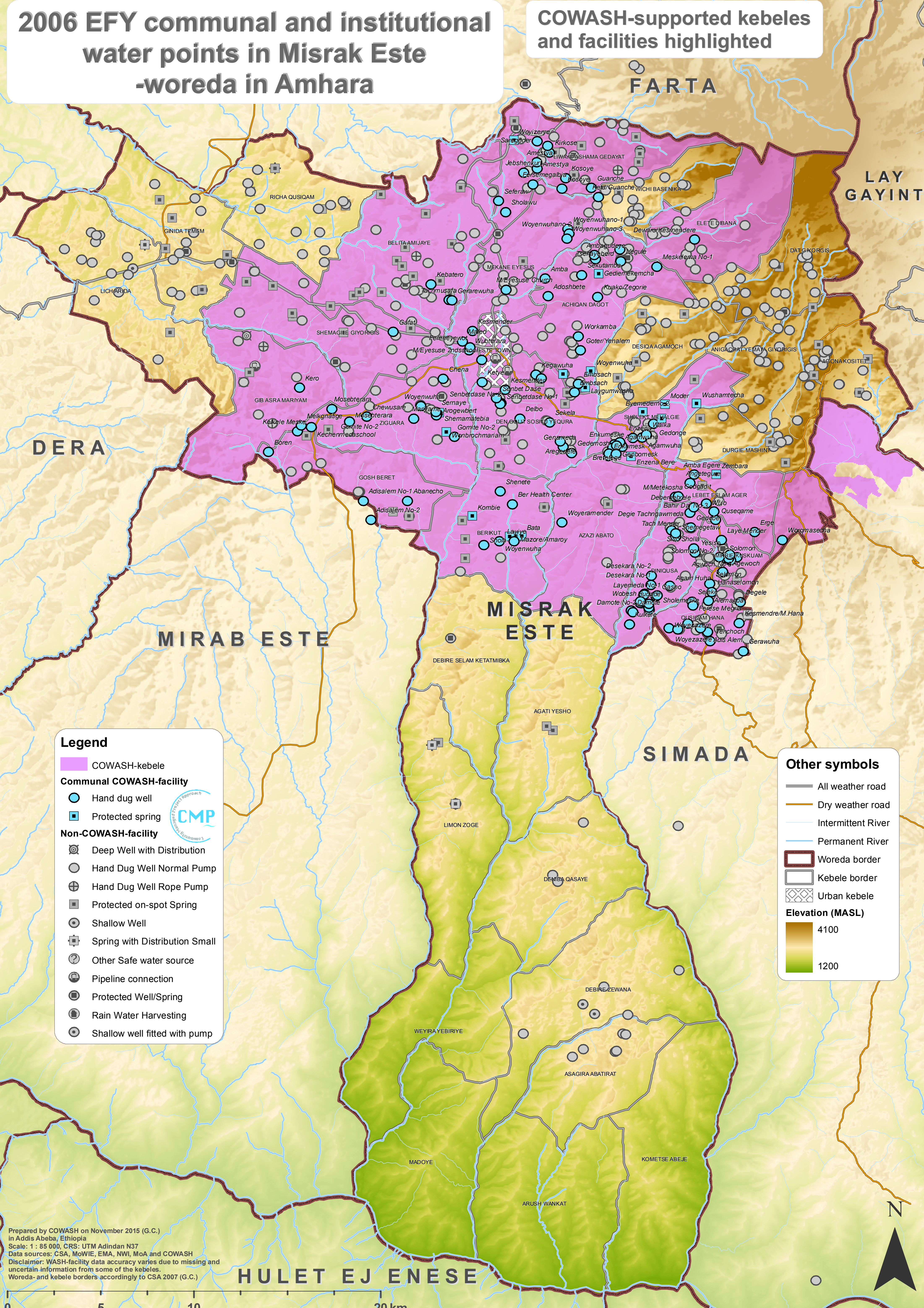


# 2006 EFY communal and institutional water points in Misrak Este -woreda in Amhara

COWASH-supported kebeles and facilities highlighted



**Legend**

- COWASH-kebele
- Communal COWASH-facility**
  - Hand dug well
  - Protected spring
- Non-COWASH-facility**
  - Deep Well with Distribution
  - Hand Dug Well Normal Pump
  - Hand Dug Well Rope Pump
  - Protected on-spot Spring
  - Shallow Well
  - Spring with Distribution Small
  - Other Safe water source
  - Pipeline connection
  - Protected Well/Spring
  - Rain Water Harvesting
  - Shallow well fitted with pump

**Other symbols**

- All weather road
- Dry weather road
- Intermittent River
- Permanent River
- Woreda border
- Kebele border
- Urban kebele
- Elevation (MASL)**
  - 4100
  - 1200

Prepared by COWASH on November 2015 (G.C.)  
 in Addis Abeba, Ethiopia  
 Scale: 1 : 85 000, CRS: UTM Adindan N37  
 Data sources: CSA, MoWIE, EMA, NWI, MoA and COWASH  
 Disclaimer: WASH-facility data accuracy varies due to missing and uncertain information from some of the kebeles.  
 Woreda- and kebele borders accordingly to CSA 2007 (G.C.)

HULET EJ ENESE

0 5 10 20 km

