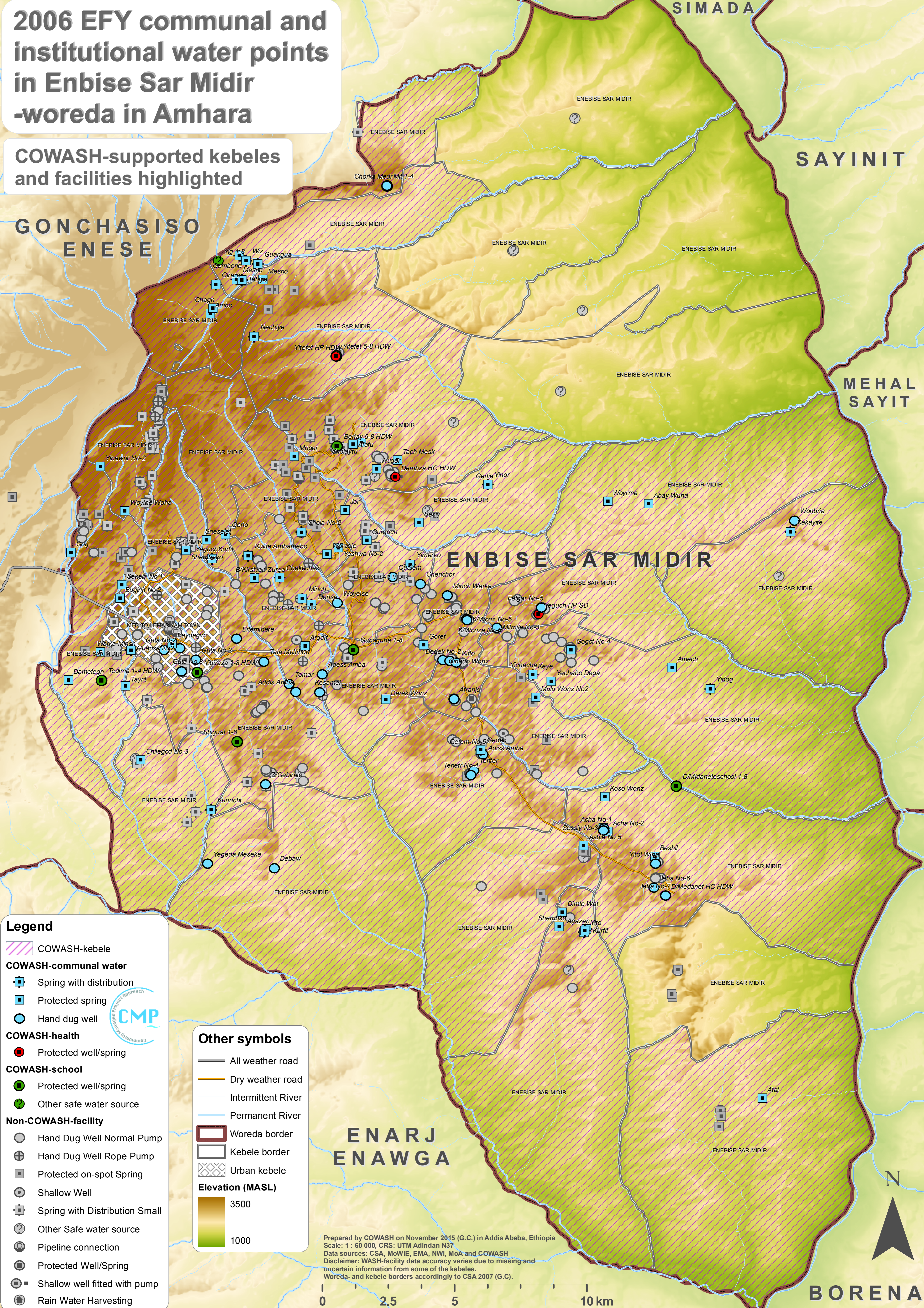


2006 EFY communal and institutional water points in Enbise Sar Midir -woreda in Amhara

COWASH-supported kebeles and facilities highlighted



Legend

- COWASH-kebele
- COWASH-communal water**
 - Spring with distribution
 - Protected spring
 - Hand dug well
- COWASH-health**
 - Protected well/spring
- COWASH-school**
 - Protected well/spring
 - Other safe water source
- Non-COWASH-facility**
 - Hand Dug Well Normal Pump
 - Hand Dug Well Rope Pump
 - Protected on-spot Spring
 - Shallow Well
 - Spring with Distribution Small
 - Other Safe water source
 - Pipeline connection
 - Protected Well/Spring
 - Shallow well fitted with pump
 - Rain Water Harvesting

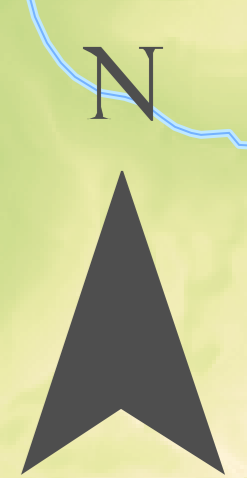
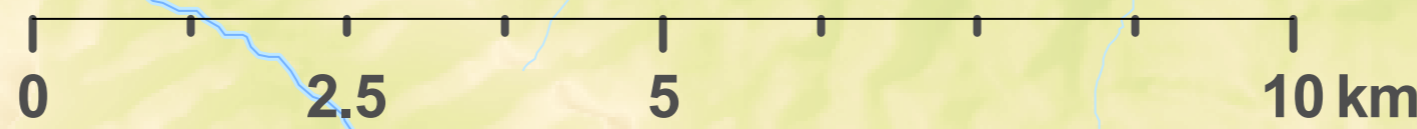
Other symbols

- All weather road
- Dry weather road
- Intermittent River
- Permanent River
- Woreda border
- Kebele border
- Urban kebele

Elevation (MASL)

- 3500
- 1000

Prepared by COWASH on November 2015 (G.C.) in Addis Ababa, Ethiopia
 Scale: 1 : 60 000, CRS: UTM Adindan N37
 Data sources: CSA, MoWIE, EMA, NWI, MoA and COWASH
 Disclaimer: WASH-facility data accuracy varies due to missing and uncertain information from some of the kebeles.
 Woreda- and kebele borders accordingly to CSA 2007 (G.C.)



BORENA