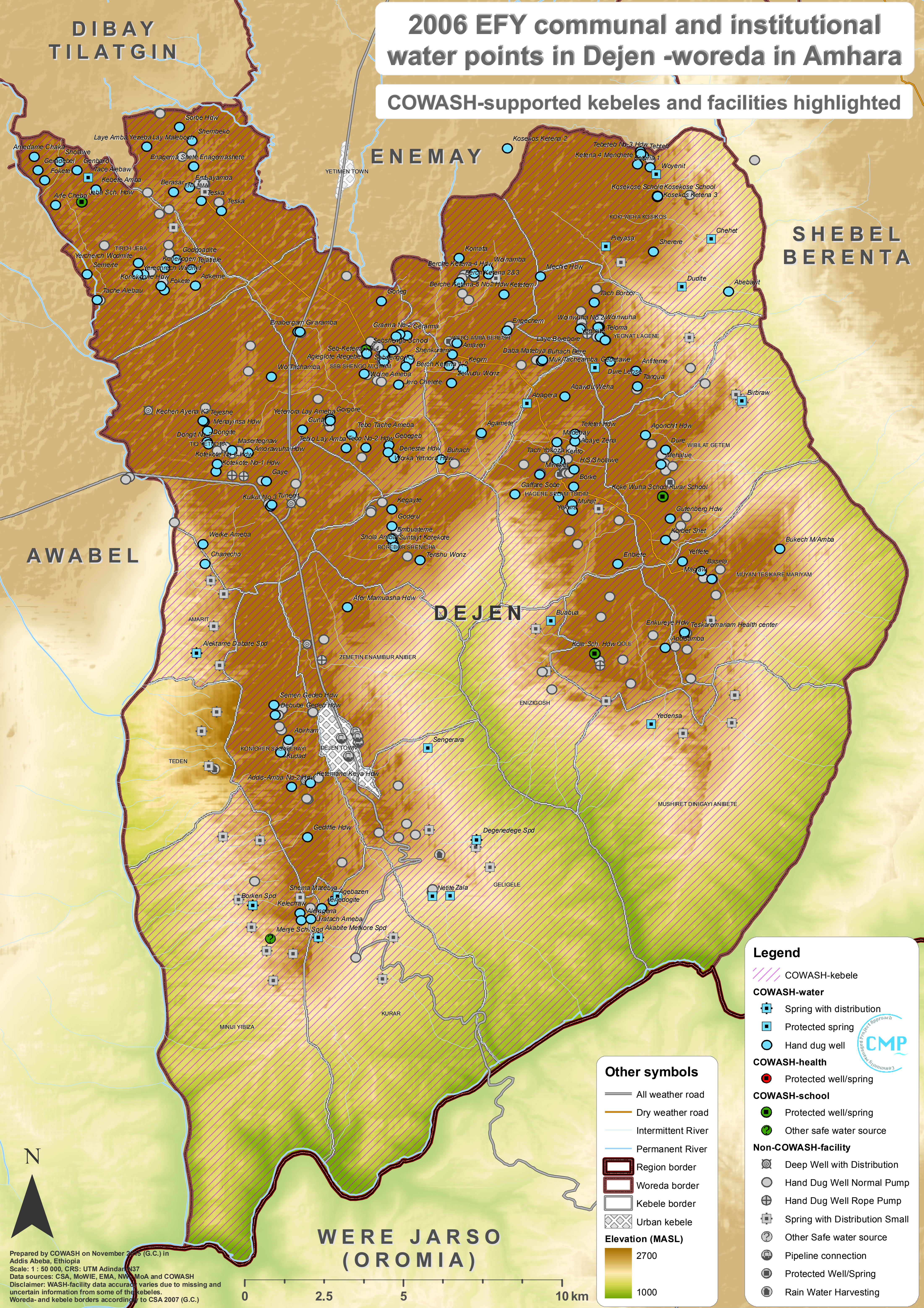


2006 EFY communal and institutional water points in Dejen -woreda in Amhara

COWASH-supported kebeles and facilities highlighted

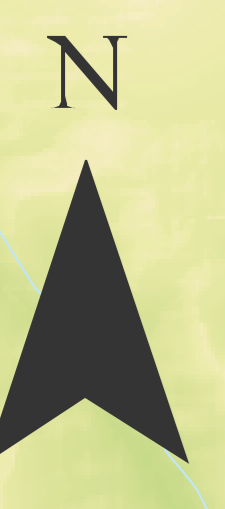


Prepared by COWASH on November 2006 (G.C.) in Addis Ababa, Ethiopia
 Scale: 1 : 50 000, CRS: UTM Adindran 37
 Data sources: CSA, MoWIE, EMA, NW, MoA and COWASH
 Disclaimer: WASH-facility data accuracy varies due to missing and uncertain information from some of the kebeles.
 Woreda- and kebele borders according to CSA 2007 (G.C.)



- Legend**
- COWASH-kebele
 - COWASH-water**
 - Spring with distribution
 - Protected spring
 - Hand dug well
 - COWASH-health**
 - Protected well/spring
 - COWASH-school**
 - Protected well/spring
 - Other safe water source
 - Non-COWASH-facility**
 - Deep Well with Distribution
 - Hand Dug Well Normal Pump
 - Hand Dug Well Rope Pump
 - Spring with Distribution Small
 - Other Safe water source
 - Pipeline connection
 - Protected Well/Spring
 - Rain Water Harvesting

- Other symbols**
- All weather road
 - Dry weather road
 - Intermittent River
 - Permanent River
 - Region border
 - Woreda border
 - Kebele border
 - Urban kebele
- Elevation (MASL)**
- 2700
 - 1000



0 2.5 5 10 km